

Ερμής Αργ/λης **77 - 57** Δραπετσώνα

75%	9 / 12	FT	13 / 21	62%
53%	19 / 36	2FG	10 / 29	34%
36%	10 / 28	3FG	8 / 26	31%
42	32 - 10	Rb	27 - 9	36
	14	Tu	15	

Referees: Τσαχάκης, Κονταράτος, Ανδρεόπουλος

By Quarter	1	2	3	4
Ερμής Αργ/λης	19	21	12	25
Δραπετσώνα	17	20	7	13

End of Quarter	1	2	3	4
Ερμής Αργ/λης	19	40	52	77
Δραπετσώνα	17	37	44	57



Ερμής Αργ/λης

Coach: Π. Γκαναβίας, Σ. Μουσιδής

Fastbreaks: 0 / 4

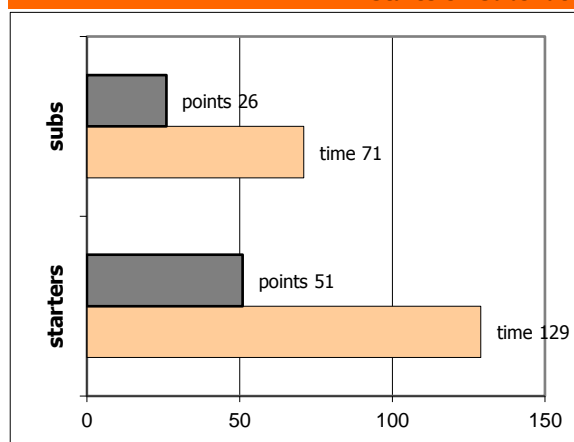
#	Player	Time (min)	Pts	Ft	2Fg	3Fg	+/-	Rbs		As	St	Tu	Bl	Fouls		Eff	
								de	of					dr	co		
4	Ραζής Μ.	11	6	0 / 0	0 / 0	2 / 3	13	1	0	3	1	0	0	0	0	10	
5	Μαυραντζώπου Γ.	18	11	1 / 1	2 / 3	2 / 5	8	5	2	0	1	1	0	2	1	14	
6	<b>Καβαλαράκης Ν.</b>	<b>25</b>	<b>11</b>	<b>2 / 4</b>	<b>3 / 3</b>	<b>1 / 3</b>	<b>3</b>	<b>4</b>	<b>0</b>	<b>3</b>	<b>0</b>	<b>2</b>	<b>0</b>	<b>4</b>	<b>2</b>	<b>12</b>	
7	Παξινός Σ.	17	0	0 / 0	0 / 1	0 / 2	8	1	0	1	0	0	0	0	3	-1	
8	<b>Κατσαμπάνης Ορ.</b>	<b>19</b>	<b>7</b>	<b>0 / 0</b>	<b>2 / 2</b>	<b>1 / 2</b>	<b>9</b>	<b>1</b>	<b>1</b>	<b>1</b>	<b>0</b>	<b>0</b>	<b>0</b>	<b>0</b>	<b>1</b>	<b>9</b>	
16	Νικολακάκος Σ.	6	2	0 / 0	1 / 1	0 / 1	-1	0	0	0	0	0	0	0	2	1	
10	<b>Φωτόπουλος Θ.</b>	<b>32</b>	<b>20</b>	<b>3 / 4</b>	<b>4 / 7</b>	<b>3 / 6</b>	<b>17</b>	<b>6</b>	<b>2</b>	<b>0</b>	<b>1</b>	<b>5</b>	<b>0</b>	<b>3</b>	<b>3</b>	<b>17</b>	
17	Κωνσταντακόπουλος Θ.	11	7	2 / 2	1 / 2	1 / 2	7	2	1	2	0	0	0	1	2	10	
12	Θειακός Αλ.	2	0	0 / 0	0 / 0	0 / 0	0	0	0	0	0	0	0	0	0	0	
13	<b>Ρετινιάς Δ.</b>	<b>21</b>	<b>4</b>	<b>0 / 0</b>	<b>2 / 5</b>	<b>0 / 3</b>	<b>10</b>	<b>2</b>	<b>0</b>	<b>2</b>	<b>2</b>	<b>2</b>	<b>0</b>	<b>1</b>	<b>0</b>	<b>2</b>	
24	<b>Τσιώκος Ν.</b>	<b>32</b>	<b>9</b>	<b>1 / 1</b>	<b>4 / 11</b>	<b>0 / 0</b>	<b>21</b>	<b>8</b>	<b>3</b>	<b>2</b>	<b>1</b>	<b>1</b>	<b>1</b>	<b>2</b>	<b>3</b>	<b>16</b>	
15	Δέδες Γ.	6	0	0 / 0	0 / 1	0 / 1	5	2	0	0	0	0	1	0	2	1	
Team								0	1			3		4	1		
1st quarter			19	1 / 1	6 / 14	2 / 5		7	2	2	4	3	0	5	4	20	
2nd quarter			21	7 / 9	4 / 8	2 / 9		8	3	3	0	2	1	8	7	21	
3rd quarter			12	0 / 0	6 / 10	0 / 5		11	3	2	0	5	0	2	5	14	
4th quarter			25	1 / 2	3 / 4	6 / 9		6	2	7	2	4	1	2	4	34	
<b>Final Stats</b>			<b>200</b>	<b>77</b>	<b>9 / 12</b>	<b>19 / 36</b>	<b>10 / 28</b>	<b>100</b>	<b>32</b>	<b>10</b>	<b>14</b>	<b>6</b>	<b>14</b>	<b>2</b>	<b>17</b>	<b>20</b>	<b>89</b>
				<b>75%</b>	<b>53%</b>	<b>36%</b>		<b>42</b>									

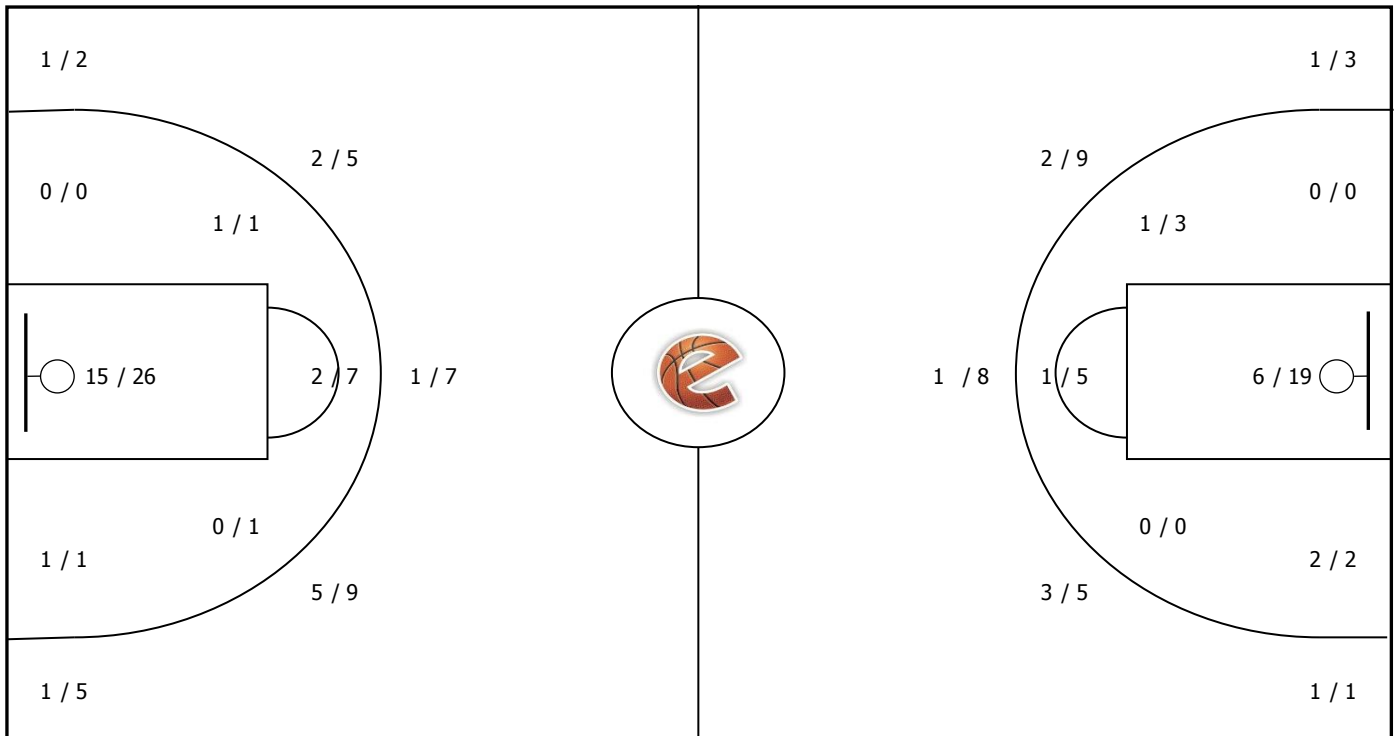
Δραπετσώνα

Coach: Σ. Καλλιπολίτης

#	Player	Pts	-	3s
0	Καράμπελας Αλ.	17	-	2
5	<b>Αρμανίδης Η.</b>	<b>7</b>	-	<b>0</b>
23	<b>Χατζηκίδης Γ.</b>	<b>15</b>	-	<b>4</b>
7	<b>Τριανταφυλλίδης Ν.</b>	<b>6</b>	-	<b>0</b>
18	Μαραγκός Μ.	0	-	0
24	Μαραγκός Α.	0	-	0
10	<b>Μανιάτης Ν.</b>	<b>2</b>	-	<b>0</b>
11	<b>Καραγιαννίδης Αγ.</b>	<b>3</b>	-	<b>0</b>
21	Ραλλάκης Χρ.	0	-	0
13	Πεζirkιανίδης Χρ.	0	-	0
14	Τσανάκας Ι.	0	-	0
15	Κυριαζίδης Δ.	7	-	2

Starters - Subs ratio

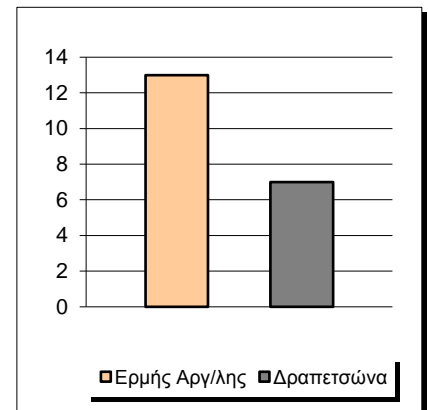
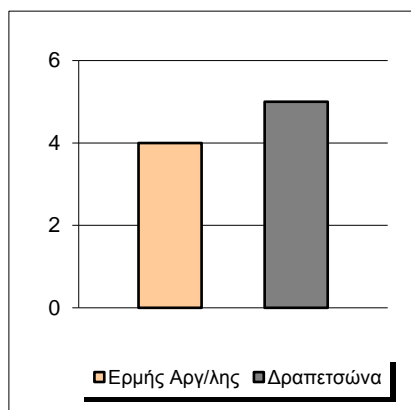
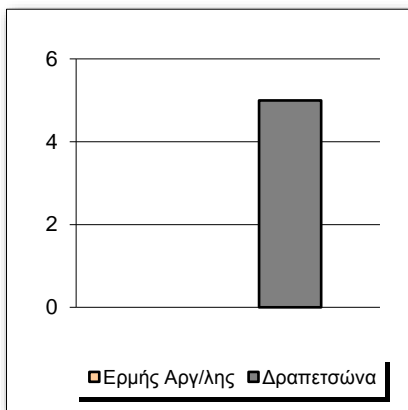




Fastbreak Pts

Turnover Pts

Second Chance Pts



Possessions

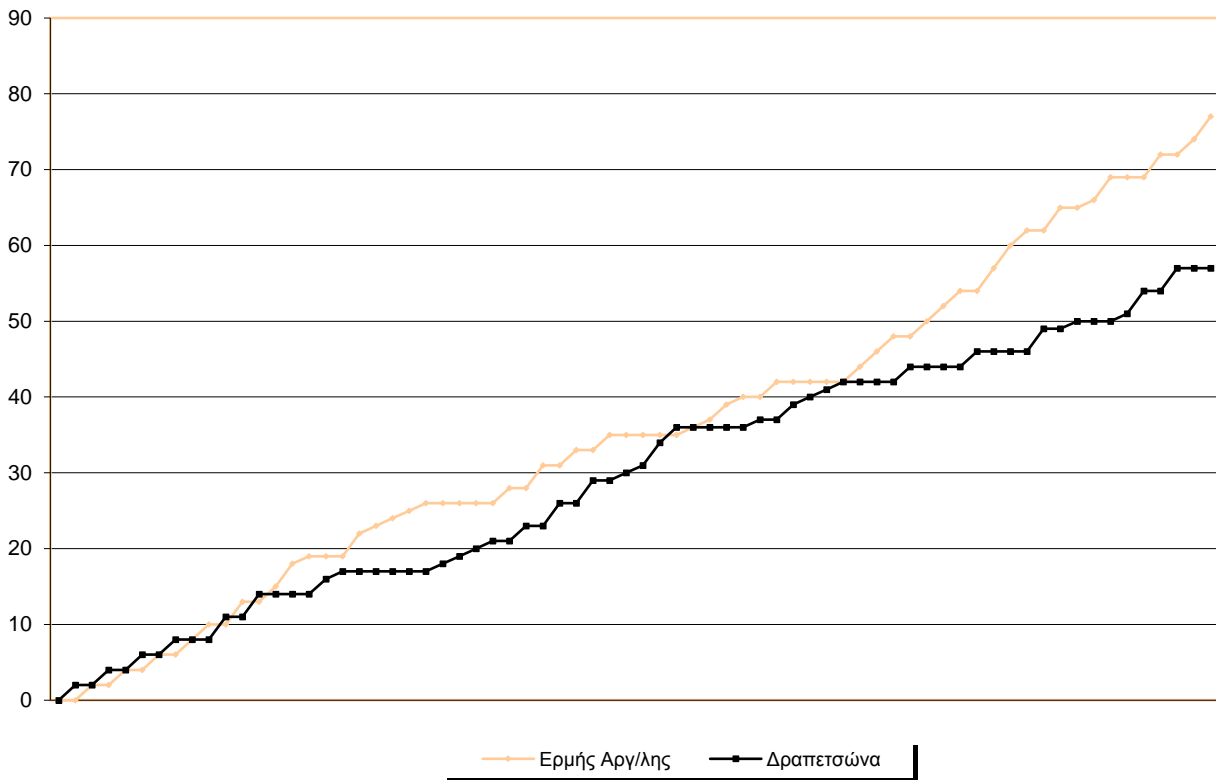
Notes

Ο Ερμής Αργ/λης είχε 95 κατοχές,  
 εκ των οποίων κατέληξαν: 64 σε σουτ  
 14 σε λάθος  
 και 17 σε κερδ. φάουλ

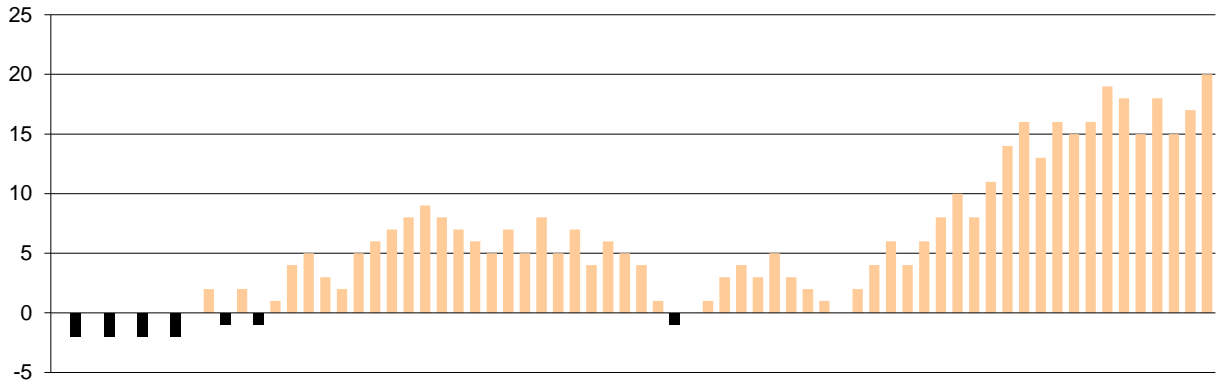


## GRAPHIC STATS

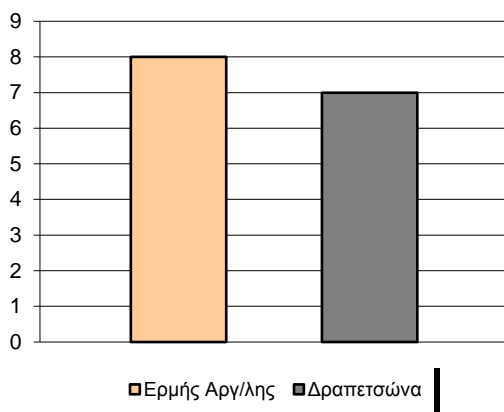
### SCORE EVOLUTION



### SCORE DIFFERENCE



### LARGEST SCORING RUN



### LARGEST LEAD

